



**Tractors  
kindly loaned  
by  
New Holland**



**Axles  
kindly  
supplied  
by ADR UK  
Tyremart Ltd**



**In Association  
With  
Blue Force Club**

[www.blueforce.uk.com](http://www.blueforce.uk.com)

**Follow our progress on our  
Facebook page**

## **Coastline**

### **Tractor Challenge April/May 2017**

**If anyone can help in any way, for example with overnight parking, helping us approach firms for any sponsorship (especially for fuel, ferry crossings, etc) or to make a personal donation, please see the contact details below.**

**Also, if anyone, or a group, want to join us for a few miles, or an overnight stop, again please give us a call.**

#### **IN AID OF STEPS CARE CENTRE**

[www.stepscentre.org.uk](http://www.stepscentre.org.uk)

[www.justgiving.com/CoastlineTractor Challenge](http://www.justgiving.com/CoastlineTractorChallenge)

#### **and CANCER RESEARCH UK**

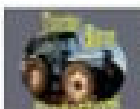
[www.cancerresearchuk.org](http://www.cancerresearchuk.org)

[uk.virginmoneygiving.com/team/CoastlineTractorChallenge](http://uk.virginmoneygiving.com/team/CoastlineTractorChallenge)

#### **CONTACT:**

**Philip Gibson 07713 251155      Peter Plehov 07774 697761**

**Email: [mulberryhomes@tiscali.co.uk](mailto:mulberryhomes@tiscali.co.uk)      Email: [peter.plehov@gmail.com](mailto:peter.plehov@gmail.com)**



**Tractor and Farm Machinery DVD Programmes - Made By  
Enthusiasts, For Enthusiasts - [www.tractorbarnproductions.com](http://www.tractorbarnproductions.com)**